

# LANDUSE/ LANDCOVER MAP Puri Konark Development Authority (PKDA)

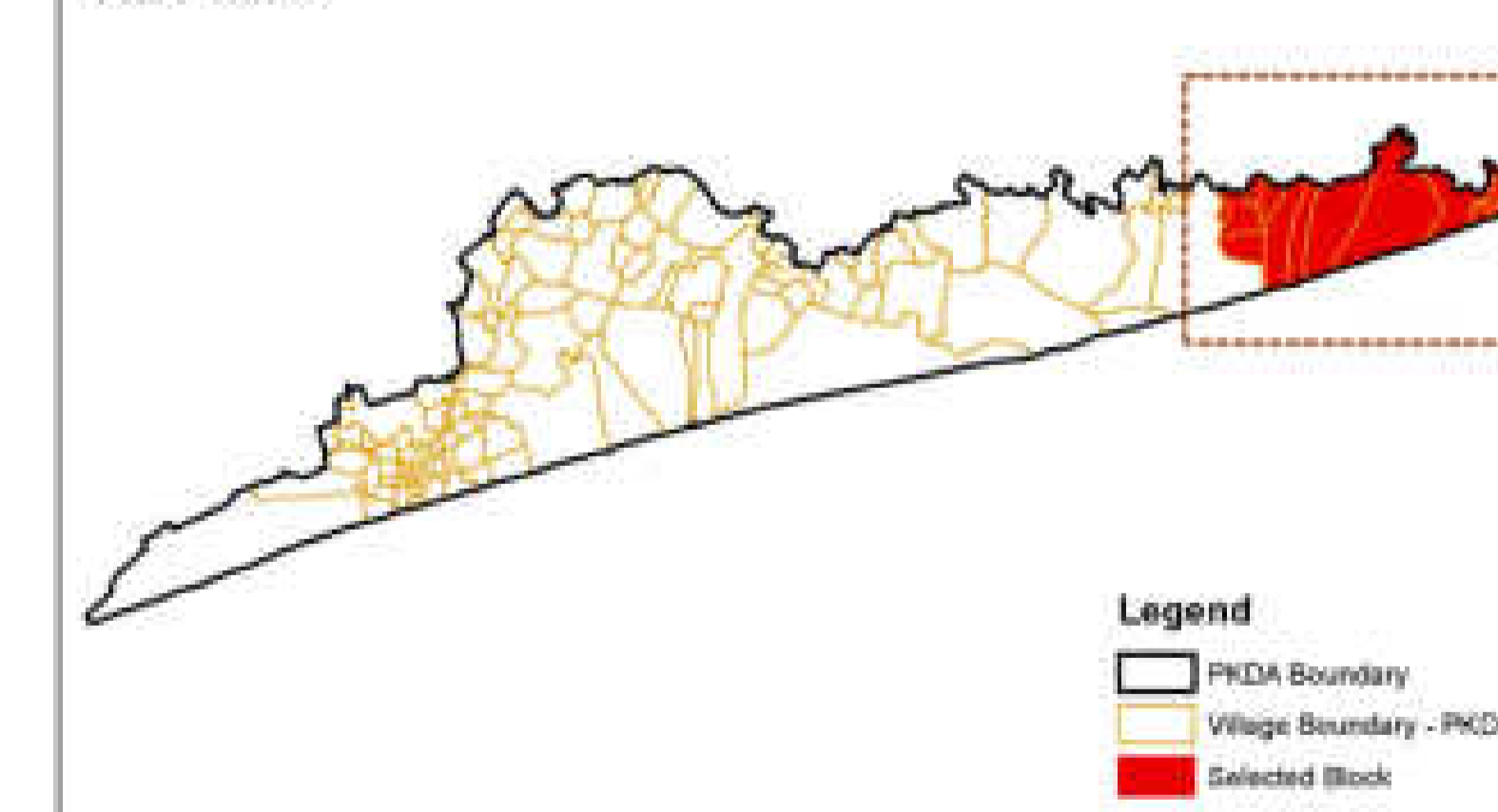


## BLOCK B

### LEGEND

<p><b>Residential (Urban)</b></p> <ul style="list-style-type: none"> <li>Planned / Plotted Houses (upto 2/3)</li> <li>Multi-storied Housing (2-2/3)</li> <li>Project Housing / Housing Scheme / Quarters</li> <li>Irregular Layout / Varying plot size house</li> <li>Clustered Settlement/ Engulfed Villages in Urban area</li> <li>Slums / Squatters</li> <li>Scattered houses</li> <li>Dispersed House</li> </ul> <p><b>Commercial</b></p> <ul style="list-style-type: none"> <li>Market Complex / Commercial Center</li> <li>Street Road Side shops/ Vending Zones</li> <li>Hotel / Lodge</li> <li>Charitable/ Rest House/ Holiday resorts</li> <li>Cinema hall/ Theatre halls</li> <li>Auto Works/ Garage/ Service Center</li> <li>Kalyan Mandap/ community center/ Auditorium</li> <li>Patrol Pump</li> <li>Dair Weekly fish Market</li> </ul> <p><b>Industrial</b></p> <ul style="list-style-type: none"> <li>Industrial Estate/ SEZ</li> <li>Heavy Industry</li> <li>Medium Industry</li> <li>Light Industry</li> <li>Cottage/Manufacture &amp; Processing units</li> <li>Warehouse/ Storage/ Godown</li> <li>Hazardous Industry (Chemical)</li> <li>Industrial dump</li> </ul> <p><b>Recreational</b></p> <ul style="list-style-type: none"> <li>Park/ Garden / Zoo</li> <li>Playground/ stadium</li> <li>Beach</li> <li>Organized Water bodies</li> <li>Embarkment ground/ Mastab</li> <li>Museum</li> <li>Monumental/ Archaeological sites</li> <li>Heritage/ Conservation areas/ Regulated Area</li> <li>Race course/ Golf course areas</li> </ul> <p><b>Transport</b></p> <ul style="list-style-type: none"> <li>Major road (NH)</li> <li>Major Road (SH &amp; ODR)</li> <li>Urban Roads (2.4 &amp; 6 lane)</li> <li>Metalled/ Earth Road/ concrete/ Village roads</li> <li>Footpath/ Cart Track</li> <li>Rail Line</li> <li>Rail Station/ Platform/ Yard/ Storage</li> <li>Bus stop/ Depot/ Terminal</li> <li>Roundabout/ Parking Area/ Traffic Island</li> </ul> <p><b>Public Semipublic</b></p> <ul style="list-style-type: none"> <li>Govt./ Semi Govt./ Other Offices/ Institutions</li> <li>Medical/ Health Centers</li> <li>Educational Centers</li> <li>Library</li> <li>Social Cultural Centers/ Clubs/ Panchayat etc.</li> </ul> <p><b>Public Utilities/ Services/ Communication</b></p> <ul style="list-style-type: none"> <li>Waste Dump/ Dumping Ground</li> <li>Water Tank/ JCH Tank/ Pump House/ WTP/ Pipeline</li> <li>Electric Substation / God Station / Distribution unit</li> <li>Sewerage/ Sewer/ STP/ Public Toilet</li> <li>Fire Station</li> <li>Post Office/ Telegraph Office/ TE/ Bank/ ATM</li> <li>Broadcasting Center / TV Center/ Studio/ Trans. Tower</li> <li>Police Station / Help Center / Outpost / Jail</li> <li>Crematorium Ground / Burial Ground</li> </ul> <p><b>Religious Centres</b></p> <ul style="list-style-type: none"> <li>Temple</li> <li>Mosque</li> <li>Church</li> <li>Ashram / Matha</li> <li>Gurdwara</li> <li>Religious Centres Other</li> </ul>	<p><b>Other Urban</b></p> <ul style="list-style-type: none"> <li>Brick Kilns / Quarries</li> <li>Stone / Sand / Earth Quarries</li> <li>Construction Sites</li> <li>Embarkment</li> <li>Bridges/ Over Bridges/ Flyover</li> <li>Jetties/ Port</li> <li>Apron/ Wharf</li> <li>Cooling Pond</li> <li>Mixed Built-up land</li> </ul> <p><b>Residential ( Rural)</b></p> <ul style="list-style-type: none"> <li>Village Settlement</li> <li>Farm House</li> <li>Scattered House</li> <li>Build-up Plots - Others</li> </ul> <p><b>Vacant (Urban)</b></p> <ul style="list-style-type: none"> <li>Residential Land</li> <li>Plotted Layout</li> <li>Vacant Land within Residential Area</li> <li>Vacant Land within Industrial Area</li> <li>Vacant Land within Industrial area</li> <li>Vacant Land within other urban area</li> </ul> <p><b>Vacant (Rural)</b></p> <ul style="list-style-type: none"> <li>Vacant Land - Public/ Semipublic use</li> <li>Vacant Land - Religious/Socio-cultural Use</li> <li>Gracing Land (gochar)</li> <li>Vacant Other (Rural)</li> </ul> <p><b>Agriculture</b></p> <ul style="list-style-type: none"> <li>Agricultural Plantation</li> <li>Crop Land (Under Crop/ fallow)</li> <li>horticultural Plantation</li> <li>Orchard/ Groves</li> </ul> <p><b>Vegetation/ Forest Land</b></p> <ul style="list-style-type: none"> <li>Dense Forest</li> <li>Open Forest</li> <li>Forest/ Coastal/ Strip Plantation</li> <li>Degraded Plantation</li> <li>Dense Scrub</li> </ul> <p><b>Waste land</b></p> <ul style="list-style-type: none"> <li>River bed/ Sand/ Alluvium</li> <li>Coastal Sand</li> <li>Waterlogged area</li> <li>Gullied/ Eroded land</li> <li>Land with/ without scrub</li> <li>Rocky/ Stony Waste</li> </ul> <p><b>Wetland</b></p> <ul style="list-style-type: none"> <li>Marshy / Swampy area</li> <li>Mad Flats</li> <li>Salpan</li> <li>Aquatic Vegetation</li> <li>Creek</li> <li>Aquaculture Ponds</li> </ul> <p><b>Water body</b></p> <ul style="list-style-type: none"> <li>River / Stream</li> <li>Canal/ distributory/ Power Channel/ Mahans</li> <li>Lake/ Ponds</li> <li>Reservoir/ Dam</li> <li>Tank/ WH/ Well</li> <li>Sea/ Bay</li> </ul> <p><b>Other</b></p> <ul style="list-style-type: none"> <li>Cyclone shelter/ MCS</li> <li>Light house</li> <li>Dairy / Poultry farm</li> <li>Mining Areas</li> <li>Mining Dump</li> <li>Other mining infrastructure</li> <li>Boundary</li> <li>Village Boundary</li> </ul>
---	--

### KEY MAP



<p><b>Source/ Database Used :</b></p> <ul style="list-style-type: none"> <li>Satellite Data : World View-2 (PAN), Year-2009/ CARTOSAT-2</li> <li>Cadastral Data : Year- Ground Truthing : Month &amp; Year-Feb 2011</li> </ul>	<p><b>Prepared for :</b></p> <p>Puri Konark Development Authority ( PKDA )</p>
<p><b>Guidance :</b></p> <p>Urban GIS Database Development for GDP/ Master Plan Preparation</p> <p>Directorate of Town Planning Dept. of Housing &amp; Urban Development Govt. of Orissa</p>	<p><b>Orissa Space Applications Centre, Bhubaneswar</b></p>
<p><b>Prepared by :</b></p> <p>Centre for Environment Planning and Technology K. L. Dhamra, University Road, Navrangpura, Ahmedabad - 38 www.cept.ac.in, Phone : (79) - 2532748</p>	<p>Signature of DAIT/NAC Officer</p> <p>Development Authority / Improvement Trust / NAC</p>

